



2025

**IoT products and solutions for  
Office Spaces and Smart Buildings**





NEW

EnoSense® Presence Count 6

EnoSense® People Counter 8

EnoSense® Desk 14

NEW

EnoSense® Desk VIB 16

NEW

EnoSense® PIR DOT 18

EnoSense® PIR Ceiling 20

EnoSense® Wall + Desk 22

EnoSense® CO2 28

EnoSense® NOISE 30

EnoPuck® CO2 32

EnoPuck® CO2 WALL 34

EnoPuck® CO2 + WALLKIT 35

EnoSense® Lux 36

EnoSense® Temp/RH 37

EnoSense® Window 38

EnoDisc® 40

VL-700 BASE 42

EnOcean® Control System 44

International certifications 46

Our services 48

# Detect occupancy

Vibration and/or PIR  
based detection of  
occupied desks or  
rooms.

# Check environment

The no  
inter  
when





# Count people

Use our sensor technology to count people inside a room or an area.

12

04


24

28



## Measure CO<sub>2</sub>


High-precise measurement of CO level inside a room or an area.  
Combined with a high power LED.



ise level of an area is  
esting for you as well  
n you try to optimize  
workspaces.



# Counting people



Due to several reasons many companies have to implement measures to take care of the health of their employees. Especially in rooms and areas where people meet each other, the number of people should be limited to a certain amount.

As another result, companies have to use their office area as efficient as possible. So, the question are: Do we have enough meeting rooms? Do they have the right size / capacity? Or do only a few people regularly book rooms that are too large?

NEW



## EnoSense® Presence Count

A new sensor using a combination of Time of Flight sensors and a Thermo IR Array.

Perfect solution to count people in an open area or also in a room (presence counting).

As a second use case, it can also count people entering or leaving an area or room (moving people).



## EnoSense® People Counter

Easy to mount and simple to use.

It is based on PIR technology, and can count people entering or leaving an area or room (moving people).

Powered by batteries it does not need any special preparations to be used.



INFOCOMM  
MEDIA  
DEVELOPMENT  
AUTHORITY



# EnoSense® Presence Count



NEW



The EnoSense® Presence Count sensor is used to count people in an area or people entering or leaving a room. It features two time-of-flight (ToF) sensors with a total resolution of 16 x 8 tiles and an overlaid thermal sensor array with a resolution of 32 x 24 tiles.

With this combination of technologies and measurement principles, the sensor can determine the number of people in an area based on the height measured by TOF and the temperature.

The sensor can be powered via an external power supply (5 ... 60 V DC), USB, or Power Over Ethernet (PoE).

For installation, service, and maintenance, the EnoSense® Presence Count has ten internal RGB LEDs that indicate the device status during commissioning and the installation process.

## Ordering information

Part number	Part name
12853	AL-460-03-868 EnoSense Presence Count / white / CE (868.3 MHz)
12880	AL-460-00-902 EnoSense Presence Count / white / FCC (902 MHz)





Interfaces	
Type	EnOcean
Number	1
Transmit / receive center frequency	868.3 / 902.875 MHz
Sensors: Presence counting / people counting	
Type 1	Time of Flight (Laser class 1, 940 nm)
Measuring range	Depends on mounting height
Type 2	Thermal IR array
User interfaces	
Service button for teach in	Yes
Service LED	Yes, 10x RGB
Acoustic feedback	No
Housing	
Colors	White
Material	Plastic, PC
Power supply	
External	Yes (12 .. 60 V DC, USB, PoE)
Internal	-
Environmental conditions	
Operating temperature	0 °C .. +60 °C
Storage temperature	-20 °C .. +70 °C
Rel. humidity	0 .. 99 %, non condensing
Protection class	IP20
Dimensions and Weight	
Weight	80 g
Dimensions	86 x 86 x 40 mm
Available options	
CE / RED	Yes
FCC	In preparation (Q3/2025)

# EnoSense® People Counter



Do you need to know how many people are actually inside a room?

Would you like to check if your meeting rooms have the optimal size, or if you could divide the same area into more smaller rooms?

Or do you have to limit the maximum number of people in a room or area due to any limitation?

In this case, you can use the **EnoSense People Counter**.

The device does not need any external connection, and can be easily mounted outside of a meeting room above the door.

It is supplied by two internal batteries (AA, 1.5 V, lifetime > 5 years) and does not need an external power supply. The People Counter is extremely small (36 x 37 x 80 mm), and will fit in nearly any situation.

Using a GDPR compliant technology (PIR = Passive Infra Red) instead of a camera, it will count people entering or leaving a meeting room. The counter value is transmitted via EnOcean technology.

## Ordering information

Part number	Part name
12452	AL-436-00-868 EnOcean sensor "EnoSense People Counter" / black / CE
12465	AL-436-00-868 EnOcean sensor "EnoSense People Counter" / white / CE
12467	AL-436-00-902 EnOcean sensor "EnoSense People Counter" / black / FCC / ISED
12468	AL-436-00-902 EnOcean sensor "EnoSense People Counter" / white / FCC / ISED
12518	AL-436-00-921 EnOcean sensor "EnoSense People Counter" / white / NCC
12537	AL-436-00-921 EnOcean sensor "EnoSense People Counter" / white / KC / KOREA
12538	AL-436-00-868 EnOcean sensor "EnoSense People Counter" / white / CHINA
12539	AL-436-00-928 EnOcean sensor "EnoSense People Counter" / white / MIC
12540	AL-436-00-868 EnOcean sensor "EnoSense People Counter" / white / IDA
12600	AL-436-00-902 EnOcean sensor "EnoSense People Counter" / black / COLOMBIA
12604	AL-436-02-928 EnOcean sensor "EnoSense People Counter" / white / JAPAN
12755	AL-436-00-921 EnOcean sensor "EnoSense People Counter" / black / KC / KOREA
12759	AL-436-02-928 EnOcean sensor "EnoSense People Counter" / black / JAPAN
12763	AL-436-00-902 EnOcean sensor "EnoSense People Counter" / white / COLOMBIA
12770	AL-436-00-921 EnOcean sensor "EnoSense People Counter" / black / NCC / TAIWAN
12772	AL-436-00-921 EnOcean sensor "EnoSense People Counter" / white / NCC / TAIWAN
12791	AL-436-00-868 EnOcean sensor "EnoSense People Counter" / white / IMDA
12799	AL-436-00-868 EnOcean sensor "EnoSense People Counter" / black / IMDA





#### Interfaces

Type	EnOcean
Number	1
Transmit / receive center frequency	see data sheet
Frequency range used	see data sheet
Maximum transmission power	see data sheet

#### Sensor: Motion detection

Type	PIR (passive infrared)
Measuring range	0.5 m - 2.0 m to head or body
Typ. counting accuracy	95%

#### User interfaces

Service button for teach in	Yes, in the front
Service LED	No
Acoustic feedback	No

#### Housing

Colors	Black, White
Material	Plastic, PC

#### Power supply

External	No
Internal	2x AA batteries, 1.5 V

#### Environmental conditions

Operating temperature	+15° .. +40° C
Storage temperature	-20° .. +70° C
Rel. humidity	0 .. 99 %, non condensing
Protection class	IP20

#### Dimensions and Weight

Weight	87 g
Dimensions	36 x 37 x 80 mm



# System overview

Optimize your IoT infrastructure with our EnOcean MQTT gateway **VL-700 BASE!**

In a world where wireless networking and smart buildings are an increasingly part of everyday life, we are setting new standards in connectivity with our unique EnOcean IoT Gateway VL-700 BASE.

It seamlessly integrates up to **32 EnoDisc or HPE Aruba Networking access points** enabling you to create a comprehensive and effective IoT networking system.

Thanks to this advanced wireless technology, you can benefit from greater flexibility and scale in deploying solutions for smart homes and commercial applications.

Our gateway easily connects devices, sensor-based applications and automation systems, creating userfriendly and energyefficient environments.

Experience the ease of smart connectivity in buildings through our solution, which not only increases efficiency but also contributes to sustainable energy use. Connect your digital ecosystem and discover new opportunities for innovation and growth. With our EnOcean IoT Gateway, you are optimally equipped to meet the connectivity challenges of the future.



In the modern world of the IoT (Internet of Things), intelligent networking plays a crucial role. Imagine that data from up to 500 sensors can be seamlessly sent to your cloud, giving you unprecedented insight into your environment.

This state-of-the-art system architecture enables you to capture precise information in real time, whether it's for monitoring environmental conditions, optimizing performance, or detecting problems early.

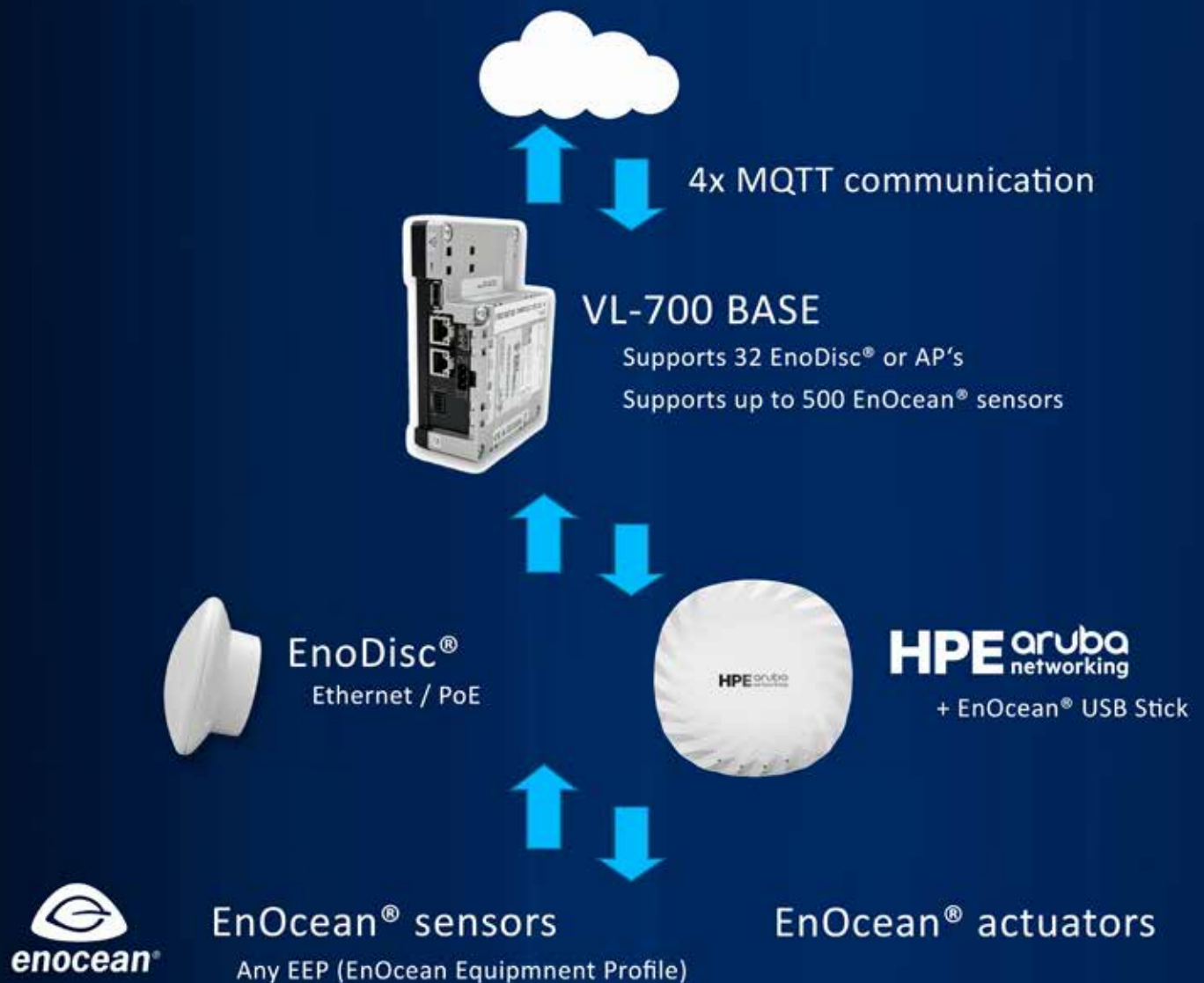
In addition two-way communication further enhances the efficiency and flexibility of our system. This feature not only allows you to receive data but also to actively control various actuators such as electronic radiator valves.

This makes it possible to efficiently regulate your heating and air-conditioning systems, save energy and significantly increase living comfort.

Thanks to these integrated solutions, controlling your smart home or industrial application is easier than ever. Optimize your processes with intelligently networked sensors and actuators – for a life in full harmony with modern technologies!



# EnOcean® to MQTT gateway solution





# Detect occupancy



Do you need to know if a desk or a room is occupied or not?

As usual, there is more than one solution for this. In case of desk occupancy detection it mainly depends on the environment which sensor you should prefer:

**EnoSense® Desk, EnoSense® Desk VIB or EnoSense® Wall & Desk.**

In case of a meeting room where you only would like to know that at least one person is inside, you should use the **EnoSense® PIR DOT or the EnoSense® PIR Ceiling.**

## EnoSense® Desk

This device will be mounted to the front edge of the table (left or right, both cover lenses incl.). It uses a high sensitive under desk PIR sensor combined with a high sensitive vibration sensor. You can select if one or both sensors are active. In this way, you can cover also situations where only vibration of the desk is not a good indicator for presence detection.

**NEW**



## EnoSense® Desk VIB

This new device uses a high sensitive vibration sensor. In contrast to the EnoSense® Desk it has no PIR, and can also be mounted on the bottom side of a table.



NEW



## EnoSense® PIR DOT

A new very small sensor to detect people inside a room. To be mounted under the ceiling or on a wall.

In this way, you can check if there is at least one person in a room.



## EnoSense® PIR Ceiling

A sensor to detect people inside a room. To be mounted under the ceiling or on a wall.

In this way, you can check if there is at least one person in a room.



INFOCOMM  
MEDIA  
DEVELOPMENT  
AUTHORITY



## EnoSense® Wall & Desk

Besides temperature, brightness and humidity, this multi-sensor can detect vibration.

Mounted to a desk with an adhesive tape, this high sensitive device will detect the presence of somebody working at the desk with a good coverage.



INFOCOMM  
MEDIA  
DEVELOPMENT  
AUTHORITY

# EnoSense® Desk

If you would like to check if a working place is occupied or not, the EnoSense® Desk is a perfect solution.

It has an under desk passive infrared sensor (PIR), with a plastic that shields the area at the right side of the sensor from detection. It is simply mounted on the front edge of the table, on the right side of a desk.

In addition, it has a high sensitive vibration sensor inside, to support the detection of people while working on a PC.

It is powered by a standard coin cell CR2032 with a lifetime of at least 5 years.

You can select by pressing the service button how the sensor works:

Mode 1: Motion detection only by PIR sensor

Mode 2: Motion detection only by Vibration sensor

Mode 3 (default):

Combined detection, logical "OR" of Vibration and PIR sensor.



## Ordering information

Part number	Part name
12588	AL-437-03-868 EnoSense Desk / white / CE (868.3 MHz)
12623	AL-437-03-902 EnoSense Desk / white / FCC (902 MHz)





<b>Interfaces</b>	
Type	EnOcean
Number	1
Transmit / receive center frequency	868.3 / 902.875 MHz
<b>Sensors: Motion detection</b>	
Type 1	PIR (passive infrared)
Measuring range	0.1 m - 2.0 m
Type 2	Vibration
<b>User interfaces</b>	
Service button for teach in	Yes, in the front
Service LED	Yes
Acoustic feedback	No
<b>Housing</b>	
Colors	White
Material	Plastic, PC
<b>Power supply</b>	
External	No
Internal	Battery CR2032 (included)
<b>Environmental conditions</b>	
Operating temperature	0 °C .. +60 °C
Storage temperature	-20 °C .. +70 °C
Rel. humidity	0 .. 99 %, non condensing
Protection class	IP20
<b>Dimensions and Weight</b>	
Weight	19 g
Dimensions	81 x 41 x 9 (26) mm
<b>Available options</b>	
CE / RED	Yes
FCC	Yes (15.231 / Part 15)

NEW

## EnoSense® Desk VIB

If you would like to check if a working place is occupied or not, the EnoSense® Desk VIB is a cost optimized solution.

It has high sensitive vibration sensor inside to support the detection of people while working on a PC. In contrast to the EnoSense® Desk, it has no PIR sensor.

Due to this fact, it is completely flat and can be mounted on top or even on the bottom of a table, using the self adhesive pad (included).

It is powered by a standard coin cell CR2032 with a lifetime of at least 5 years.



### Ordering information

Part number	Part name
12846	AL-437-02-868 EnoSense Desk VIB / white / CE (868.3 MHz)
12847	AL-437-02-902 EnoSense Desk VIB / white / FCC (902 MHz)



Interfaces	
Type	EnOcean
Number	1
Transmit / receive center frequency	868.3 / 902.875 MHz
Sensors: Motion detection	
Type 1	Vibration
User interfaces	
Service button for teach in	Yes, in the front
Service LED	Yes
Acoustic feedback	No
Housing	
Colors	White
Material	Plastic, PC
Power supply	
External	No
Internal	Battery CR2032 (included)
Environmental conditions	
Operating temperature	0 °C .. +60 °C
Storage temperature	-20 °C .. +70 °C
Rel. humidity	0 .. 99 %, non condensing
Protection class	IP20
Dimensions and Weight	
Weight	19 g
Dimensions	81 x 41 x 9 (26) mm
Available options	
CE / RED	Yes
FCC	Yes (15.231 / Part 15)

**NEW**

# EnoSense® PIR DOT



If you would like to check if at least one person is inside a room or within an area, you should select the EnoSense PIR DOT.

It is a ceiling mounted passive infrared sensor (PIR) and has a detection radius of approx. 3 m when mounted at 2.5 m height.

It is powered by a long-life battery (CR3032), is extremely small and can be used even in rooms where a solar cell would not be able to harvest enough energy..

To support the installation process, a so called walk test can be activated. In this case, an internal LED will light up and show that the sensor detected a movement and would send a message in this case.

## Ordering information

Part number	Part name
12862	AL-438-00-868 EnoSense PIR DOT / white / CE
12867	AL-438-00-902 EnoSense PIR DOT / white / FCC





#### Interfaces

Type	EnOcean
Number	1

#### Sensor: Motion detection

Type	PIR (passive infrared)
Mounting height (recommended)	2.5 - 3.0 m

#### Sensor: Brightness

Type	Light sensor
Range	0 .. 65.535 lux

#### User interfaces

Service button for teach in	Yes
Service LED	Yes, behind the dome
Acoustic feedback	No

#### Housing

Color	White
Material	Somos® Ledo 6060

#### Power supply

External	No
Internal	Battery (CR3032)

#### Environmental conditions

Operating temperature	0° .. +40 °C / 32° .. 104 °F (indoor only)
Storage temperature	-20° .. +70° C / 32° .. 185° F
Rel. humidity	20 .. 85 %, r.h., non condensing
Protection class	IP20

#### Dimensions and Weight

Weight	25 g
Dimensions	41 x 27 mm

# EnoSense® PIR Ceiling



Like the EnoSense® PIR DOT you can select the EnoSense PIR Ceiling to detect that at least one person is in a room or an area.

It is an ceiling mounted passive infrared sensor (PIR) and has a detection radius of approx. 5 m when mounted at 2.5 m height.

It is mainly powered by a high-efficient solar cell and has a back-up battery inside to avoid a lack of energy for example in case of bad weather conditions outside that will lead to a decreased ambient light for a while.

To support the installation process, a so called walk test can be activated. In this case, an internal LED will light up and show that the sensor detected a movement and would send a mes-

## Ordering information

Part number	Part name
12321	AL-432-00-868 EnoSense PIR Ceiling / white / CE
12394	AL-432-00-902 EnoSense PIR Ceiling / white / FCC
12517	AL-432-00-921 EnOcean motion sensor "EnoSense PIR Ceiling" / white / NCC / TAIWAN
12533	AL-432-00-921 EnOcean motion sensor "EnoSense PIR Ceiling" / white / KC
12534	AL-432-00-868 EnOcean motion sensor "EnoSense PIR Ceiling" / white / CHINA
12535	AL-432-00-928 EnOcean motion sensor "EnoSense PIR Ceiling" / white / MIC
12536	AL-432-00-868 EnOcean motion sensor "EnoSense PIR Ceiling" / white / IDA
12602	AL-432-02-902 EnOcean motion sensor "EnoSense PIR Ceiling" / white / COLOMBIA
12607	AL-432-02-928 EnOcean motion sensor "EnoSense PIR Ceiling" / white / JAPAN
12795	AL-432-00-868 EnOcean motion sensor "EnoSense PIR Ceiling" / white / IMDA





#### Interfaces

Type	EnOcean
Number	1

#### Sensor: Motion detection

Type	PIR (passive infrared)
Mounting height (recommended)	2.5 - 3.0 m

#### User interfaces

Service button for teach in	Yes
Service LED	Yes, behind the dome
Acoustic feedback	No

#### Housing

Colors	White
Material	Plastic, PC

#### Power supply

External	No
Internal	Solar cell, backup battery (CR2032)

#### Environmental conditions

Operating temperature	0° .. +30° C / 32° .. 85° F (indoor only)
Storage temperature	-20° .. +70° C / 32° .. 185° F
Rel. humidity	20 .. 85 %, r.h., non condensing
Protection class	IP20

#### Dimensions and Weight

Weight	87 g
Dimensions	68 x 25 x 7 (25) mm

# EnoSense® Wall + Desk



If you would like to check if somebody is working on a desk, and you can rely on a vibration due to the desk construction and the typical movements based on the job, you should select the **EnoSense® Wall + Desk**.

It is a desk occupancy sensor with a high sensitivity vibration and acceleration sensor. It is mounted with an adhesive tape (included) to the top surface of a desk. In contrast to the **EnoSense® Desk**, it has only a vibration sensor.

The integrated solar cell of the sensor is supported by an internal backup battery.



## Ordering information

Part number	Part name
12286	AL-431-00-868 EnOcean Multisensor "EnoSense Wall & Desk" / white / CE
12471	AL-431-00-868 EnOcean Multisensor "EnoSense Wall & Desk" / black / CE
12472	AL-431-00-902 EnOcean Multisensor "EnoSense Wall & Desk" / white / FCC
12473	AL-431-00-902 EnOcean Multisensor "EnoSense Wall & Desk" / black / FCC
12515	AL-431-00-921 EnoSense Wall & Desk / NCC / TAIWAN white
12522	AL-431-00-928 EnOcean Multisensor "EnoSense Wall & Desk" / white / MIC
12523	AL-431-00-921 EnOcean Multisensor "EnoSense Wall & Desk" / white / KC
12524	AL-431-00-868 EnOcean Multisensor "EnoSense Wall & Desk" / white / CHINA
12525	AL-431-00-868 EnOcean Multisensor "EnoSense Wall & Desk" / white / IDA
12635	AL-431-02-928 EnOcean Multisensor "EnoSense Wall & Desk" / black / JAPAN
12636	AL-431-02-928 EnOcean Multisensor "EnoSense Wall & Desk" / white / JAPAN
12643	AL-431-01-902 EnOcean Multisensor "EnoSense Wall & Desk" / white / COLOMBIA
12762	AL-431-01-902 EnOcean Multisensor "EnoSense Wall & Desk" / black / COLOMBIA
12769	AL-431-00-921 black
12778	AL-431-00-921 EnOcean Multisensor "EnoSense Wall & Desk" / black / KC
12790	AL-431-00-868 EnOcean Multisensor "EnoSense Wall & Desk" / white / IMDA
12798	AL-431-00-868 EnOcean Multisensor "EnoSense Wall & Desk" / black / IMDA





#### Interfaces

Type	EnOcean
Number	1
Transmit / receive center frequency	see data sheet

#### Sensors: Motion detection

Type	Vibration / acceleration
Range / sensitivity	+/- 2 g / 0.003 g
Type	Temperature, humidity, ambient light, not activated by default

#### User interfaces

Service button for teach in	Yes, at the side
Service LED	Yes, on top
Acoustic feedback	No

#### Housing

Colors	Black, White, Beige
Material	Plastic, PC

#### Power supply

External	No
Internal	Solar cell, backup battery (CR1632)

#### Environmental conditions

Operating temperature	-5° .. +40° C / 23° .. 104° F
Storage temperature	-20° .. +70° C / -4° .. 158° F
Rel. humidity	0 .. 99 %, non condensing
Protection class	IP20

#### Dimensions and Weight

Weight	29 g
Dimensions	50 x 50 x 17 mm

# Check environment



Quite often our customers need to check the CO<sub>2</sub> concentration in an office or in a meeting room to take care of the air quality.

In addition, for example in a classroom of a school, also a local LED should signal the CO<sub>2</sub> concentration with different colors (green / yellow / orange / red).

We can provide you pure solar powered sensors for CO<sub>2</sub> and NOISE measurement (**EnoSense CO<sub>2</sub>** and **EnoSense NOISE**).

In addition, we have the **EnoPuck®** series multi-sensor devices with high brightness RGB-LEDs inside (therefore an external power supply is needed).

Two devices with identical housing:

The **EnoSense® NOISE** measures the sound pressure level in dBSPL, and the **EnoSense® CO<sub>2</sub>** the CO<sub>2</sub> concentration in ppm.

Both devices are powered by the full-size solar cell in the front. There are no batteries inside.

With the included mounting bracket or an adhesive tape it can be easily installed in any room to any wall.



EnoSense® NOISE



EnoSense® CO<sub>2</sub>





### Enopuck® CO2 / with RGB LED

You can simply put it on a desk and plug the external power supply into a power outlet. Done.

The Enopuck® CO2 measures the CO2 concentration of the ambient air. If you do not change the configuration, the internal LED'S will light in green, yellow and red depending on the measured value. In addition, it measures also temperature, rel. humidity and ambient light and transmits data via EnOcean Wireless interface.



### Enopuck® CO2 WALL

Has same features as the Enopuck® CO2, but the Enopuck CO2 WALL is prepared to be connected to an in-wall power supply (+12 V DC). Therefore, the power cable is on the backside of the device and no power connector is visible from the outside.

You should select this device if you do not like the external power supply and the power cord on the wall.



### Enopuck® CO2 + WALLKIT

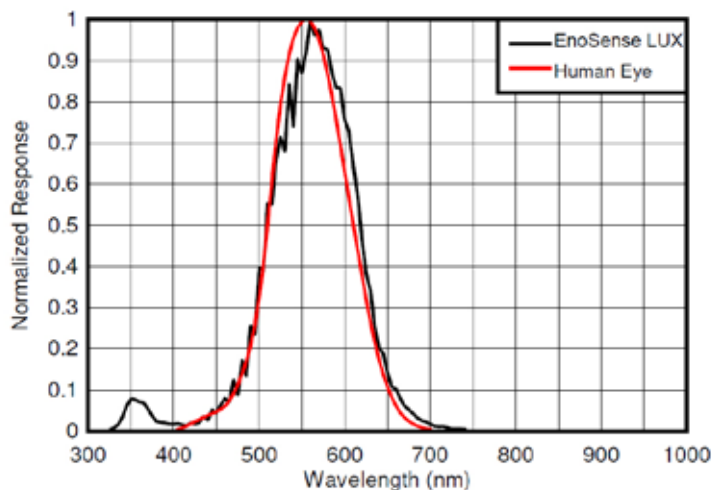
Same features as the Enopuck® CO2, but if you order the Enopuck CO2 + WALLKIT, it is prepared to be mounted to a wall.

You should select this kit if you would like to combine the option of a wall mounted Enopuck CO2 with an external power supply.

# Well-being in the office

The success of a company depends on the health and well-being of its employees. When employees feel comfortable in their workplace, they are not only more productive but also more motivated. In addition, satisfied employees are less prone to stress and burnout.

With our new EnoSense® sensors in a very smart and small housing, you can now measure the most relevant parameters like temperature, rel. humidity and brightness.



## Adapted spectral sensitivity

The EnoSense® LUX measures the ambient light that illuminates the device. The sensor used measures the light with a spectral sensitivity that closely matches that of the human eye and has very good infrared suppression.



**NEW**



## EnoSense® Lux

This new sensor works with an internal battery for use in any ambient light situation.

Every 15 minutes, or every minute if there is a change, EnoSense® Lux transmits its current measurement. In a stylish design, it fits unobtrusively on any wall, measuring just 81 x 41 x 9 mm.



## EnoSense® Temp/RH

This small sensor measures temperature and rel. humidity.

It provides high accurate values ( temp.:  $\pm 0.3$  °C, hum.:  $\pm 3$  %). The sensor in the stylish design housing can be easily mounted anywhere with the enclosed adhesive pad.



**enocean**

If you would like to measure the CO2 concentration of the ambient air and you do not need a local visual feedback as you have in case of the **EnoPuck® CO2**, you should select the **EnoSense® CO2**.

It measures the CO2 concentration, temperature and rel. humidity and transmits these values together with the actual energy level via EnOcean telegrams.

At a typical ambient light level, it will send new values every 300 seconds.

The full-size solar cell provides all the energy to the EnoSense CO2 without the need of an internal battery.



## Ordering information

Part number	Part name
12590	AL-439-00-868 EnoSense CO2 / white / CE
12619	AL-439-00-868 EnoSense CO2 / black / CE
12639	AL-439-00-902 EnoSense CO2 / white / FCC
12640	AL-439-00-902 EnoSense CO2 / black / FCC





#### Interfaces

Type	EnOcean
Number	1

#### Sensors:

Type	CO <sub>2</sub>
Range	0 .. 5.000 ppm
Accuracy typ.@25° C	+/- (30 ppm +3 % rdg)
Measurement & tx interval	300 s

#### User interfaces

Service button for teach in	Yes, back side
Service LED	Yes, inside
Acoustic feedback	No

#### Housing

Colors	White, Black
Material	Plastic, PC

#### Power supply

External	No
Internal	Solar cell, no batteries

#### Environmental conditions

Operating temperature	0° .. +50° C / 32° .. 122° F (indoor only)
Storage temperature	-15° .. +60° C / 5° .. 145° F
Rel. humidity	0 .. 99 %, r.h., non condens- ing
Protection class	IP20

#### Dimensions and Weight

Weight	120 g
Dimensions	67 x 116 x 23 mm

#### Available options

CE / RED	Yes
FCC	Yes (15.231 / Part 15)

# EnoSense® NOISE



If you would like to measure the noise level of the environment, you should select the **EnoSense® NOISE**.

It measures the noise level in dBSPL and transmits the value together with the actual energy level via EnOcean telegrams.

At a typical ambient light level, it will send new values every 240 seconds.

The full-size solar cell provides all the energy to the **EnoSense® NOISE**, without the need of an internal battery.



## Ordering information

Part number	Part name
12620	AL-440-00-868 EnoSense NOISE / white / CE
12621	AL-440-00-868 EnoSense NOISE / black / CE
12637	AL-440-00-902 EnoSense NOISE / white / FCC
12638	AL-440-00-902 EnoSense NOISE / black / FCC





#### Interfaces

Type	EnOcean
Number	1

#### Sensors:

Type	Noise level sensor
Range	35.. 80 dBSPL
Tx interval	240 s

#### User interfaces

Service button for teach in	Yes, back side
Service LED	Yes, inside
Acoustic feedback	No

#### Housing

Colors	White, Black
Material	Plastic, PC

#### Power supply

External	No
Internal	Solar cell, 2x AAA batteries

#### Environmental conditions

Operating temperature	0° .. +50° C / 32° .. 122° F (indoor only)
Storage temperature	-15° .. +60° C / 5° .. 145° F
Rel. humidity	0 .. 99 %, r.h., non condensing
Protection class	IP20

#### Dimensions and Weight

Weight	120 g
Dimensions	67 x 116 x 23 mm

#### Available options

CE / RED	Yes
FCC	Yes (15.231 / Part 15)

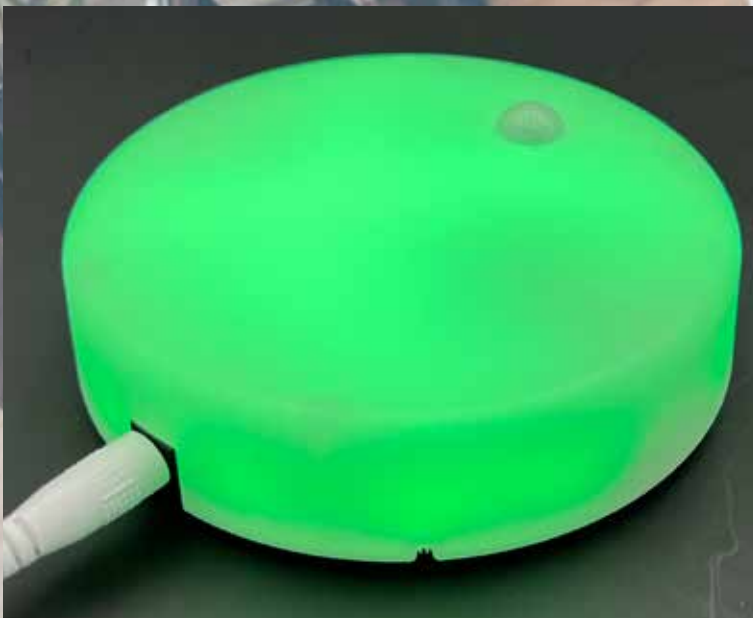


If you would like to measure the CO<sub>2</sub> concentration of the ambient air and you need a local visual feedback to tell people inside a room immediately that's time to open the window, then the **EnoPuck® CO<sub>2</sub>** is the right choice.

A state-of-the-art CO<sub>2</sub> sensor (NDIR) measures the CO<sub>2</sub> concentration of the air. With the standard configuration, the internal high-power RGB LED will change the color according to the measured level from green to yellow and red. Due to the fact that the LED can illuminate the EnoPuck CO<sub>2</sub> the whole time, an external power supply (+12 V DC) is necessary (included).

At the same time, you can transmit the CO<sub>2</sub> value and measured temperature, humidity and the ambient light level via EnOcean wireless interface. Also a PIR motion detector and a vibration sensor is integrated. This can be used locally to disable the LEDs, for example when nobody is present.

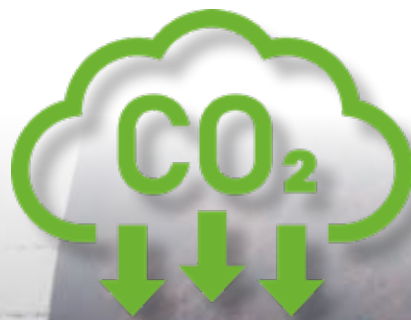
One main feature is also that you can configure the whole device, for example the threshold values, the transmit intervals and the LEDs colors and brightness via the free-of-charge software tool BL-PC-FLEX-2 and an EnOcean USB-Stick.



## Ordering information

Part number	Part name
12301	AL-602-01-868 EnoPuck CO <sub>2</sub> / CE
12562	AL-602-01-902 EnoPuck CO <sub>2</sub> / FCC
12776	AL-602-01-921 EnoPuck CO <sub>2</sub> / NCC / TAIWAN
12782	AL-602-01-921 EnoPuck CO <sub>2</sub> / KC/ KOREA
12792	AL-602-01-868 EnoPuck CO <sub>2</sub> / IMDA





#### Interfaces

Type	EnOcean
Number	1
Transmit / receive center frequency	see data sheet

#### Sensors:

Type	CO <sub>2</sub>
Range	0 .. 2.550 ppm
Accuracy typ. @25° C	+/- (30 ppm +3 % rdg)
Type	rel. humidity
Accuracy	+/- 2 %
Type	Temperature
Accuracy	+/- 1° C
Type	Motion / PIR
Detection range	3 - 5 m

#### User interfaces

Service button for teach in	Yes, at the side
Service LED	No
Acoustic feedback	Yes

#### Power supply

External	Yes, +12 V DC power supply
Internal	No

#### Environmental conditions

Operating temperature	0° .. +50° C / 32° .. 122° F (indoor only)
Storage temperature	-20° .. +70° C / / 32° .. 185° F
Rel. humidity	0 .. 99 %, r.h., non condensing
Protection class	IP20

#### Dimensions and Weight

Weight	150 g
Dimensions	100 x 28 mm

#### Housing

Colors	White, opaque
Material	Plastic, PC

If you would like to measure the CO2 concentration of the ambient air and you need a local visual feedback to tell people inside a room immediately that's time to open the window, the **EnoPuck® CO2 WALL** can be the right choice as well.

Compared with the EnoPuck CO2, the **EnoPuck® CO2 WALL** has exactly the same technical features. The only difference is that it is supplied by an in-wall mounted power supply (12 V DC), so the external power supply and also no power cord is visible on the wall.

This is quite useful if you do already have a power outlet available, or you simply do not like to have the power cord on the wall.



## Ordering information

Part number	Part name
12433	AL-602-04-868 EnoPuck CO2 WALL / CE
12564	AL-602-04-902 EnoPuck CO2 WALL / FCC
12670	AL-602-01-868 EnoPuck CO2 WALL / CHINA
12672	AL-602-04-921 EnoPuck CO2 WALL / NCC / TAIWAN
12676	AL-602-01-928 EnoPuck CO2 WALL / JAPAN
12783	AL-602-04-921 EnoPuck CO2 WALL / KC / KOREA





# EnoPuck® CO2 + WALLKIT

If you do not want to use an in-wall power supply, you can use this option. The standard **EnoPuck CO2** comes along with a wall mount bracket, same as in case of the **EnoPuck CO2 WALL**. But at the same time it is supplied by the standard extern power supply of the EnoPuck CO2.

So this version is mainly used if you want to have the **EnoPuck CO2** mounted to a fixed position on the wall, but you do not want to spend effort to do some construction work.



## Ordering information

Part number	Part name
12843	AL-602-01-868 EnoPuck CO2 WALL + WALLKIT / CE
12845	AL-602-01-902 EnoPuck CO2 WALL + WALLKIT / FCC

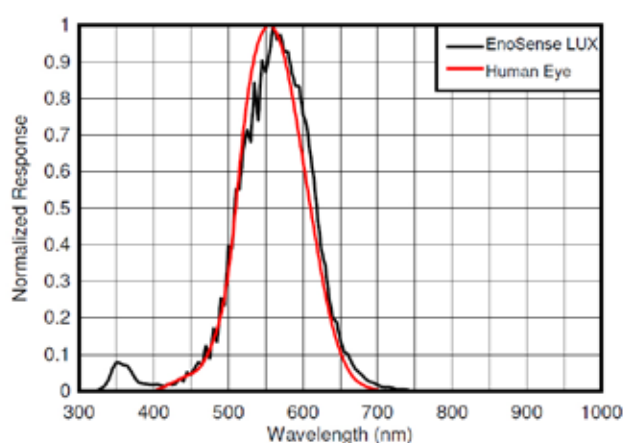
# NEW

## EnoSense® Lux

The **EnoSense® Lux** measures the illumination level in lux, and transmits the value wirelessly in accordance with the EnOcean radio standard.

It is powered by an internal CR2032 battery. The lifetime is at least 5 years until the battery has to be replaced.

It can be mounted either using the enclosed double-sided adhesive pad (recommended) or by screwing it to the wall.



### Adapted spectral sensitivity

The EnoSense® LUX measures the ambient light that illuminates the device. The sensor used measures the light with a spectral sensitivity that closely matches that of the human eye and has very good infrared suppression.



### Interfaces

Type	EnOcean
Number	1

### Sensors EnoSense® Lux

Type	Illumination
Range	0 .. 60.000 lux
Tx interval	60 s / 15 min

### Sensors EnoSense® Temp/RH

Type	Temp., rel. humidity
Range	0 .. 60 °C / 0 .. 95 %
Tx interval	60 s / 15 min

### User interfaces

Service button for teach in	Yes, back side
Service LED	Yes, inside

### Housing

Colors	White, Black
Material	Plastic, PC

### Ordering information

Part number	Part name
12836	AL-443-00-868 EnoSense Lux white / CE
12837	AL-443-00-902 EnoSense Lux white / FCC



# EnoSense® Temp/RH

NEW

The **EnoSense® Temp/RH** offers a simple way of measuring temperature and relative humidity and transmitting the values wirelessly in accordance with the EnOcean radio standard.

It is powered by an internal CR2032 battery. The lifetime is at least 5 years until the battery has to be replaced.

It can be mounted either using the enclosed double-sided adhesive pad or by screwing it to the wall.



## Power supply

External	No
Internal	CR2032

## Environmental conditions

Operating temperature	0° .. + 60° C / 32° .. 140° F (indoor only)
Storage temperature	-15° .. +70° C / 5° .. 158° F
Rel. humidity	0 .. 99 %, r.h., non condensing
Protection class	IP20

## Dimensions and Weight

Weight	15 g
Dimensions	81 x 41 x 9 mm

## Available options

CE / RED	Yes
FCC	Yes (15.231 / Part 15)

## Ordering information

Part number	Part name
12391	AL-435-00-868 EnoSense Temp/RH white / CE
12829	AL-435-00-902 EnoSense Temp/RH white / FCC



#### Ordering information

Part number	Part name
12841	AL-444-00-868 EnoSense Window white / CE
12842	AL-444-00-902 EnoSense Window white / FCC



# EnoSense® Window

NEW

The **EnoSense® Window** has two integrated magnetic field sensors and transmits a detected magnet in a standardized message format in accordance with the EnOcean radio standard.

It is powered by an internal CR2032 battery. The lifetime is at least 5 years until the battery has to be replaced.

It can be mounted by using the enclosed double-sided adhesive pad.



## Interfaces

Type	EnOcean
Number	1

## Sensors EnoSense® Window

Type	2x magnetic field sensor 1x front + 1x side
Range	typ. 15 mm front typ. 7 mm side with the magnet included
Tx interval	immediately / 15 min

## User interfaces

Service button for teach in	Yes, back side
Service LED	Yes, inside

## Housing

Colors	White, Black
Material	Plastic, PC

## Power supply

External	No
Internal	CR2032

## Environmental conditions

Operating temperature	0° .. + 60° C / 32° .. 140° F (indoor only)
Storage temperature	-15° .. +70° C / 5° .. 158° F
Rel. humidity	0 .. 99 %, r.h., non condensing
Protection class	IP20

## Dimensions and Weight

Weight	15 g
Dimensions	81 x 41 x 9 mm

## Available options

CE / RED	Yes
FCC	Yes (15.231 / Part 15)

# EnoDisc® - Ethernet based EnOcean Transceiver

The actually smartest available interface between a PLC with Ethernet interface and maybe several hundreds of EnOcean wireless sensors and actuators is the new and innovative EnoDisc. To provide the easiest way of installation, the EnoDisc communicates via Ethernet and is powered by Power over Ethernet PoE / 48 V DC, using the same Ethernet cable.

The EnoDisc uses the EnOcean Serial Protocol 3 (ESP3) to receive and transmit data from/to the Ethernet.

The EnoDisc comes in an on-wall housing with a modern design and can be easily mounted to the ceiling. The electrical connection is done using a standard LSA tool for Ethernet cables.

An integrated web server allows to track EnOcean communication in real time.

Power  
Over  
Ethernet



## Ordering information

Part number	Part name
12320	AL-512-01-868 IP-ENOCEAN-BRIDGE POE / RJ45 / EnoDisc / white / CE
12435	AL-512-01-868 IP-ENOCEAN-BRIDGE POE / RJ45 / EnoDisc / black / CE
12404	AL-512-01-902 IP-ENOCEAN-BRIDGE POE / RJ45 / EnoDisc / white / FCC
12561	AL-512-00-902 IP-ENOCEAN-BRIDGE POE / RJ45 / EnoDisc / black / FCC
12516	AL-512-01-921 IP-ENOCEAN-BRIDGE POE / RJ45 / EnoDisc / white / NCC / TAIWAN
12773	AL-512-01-921 IP-ENOCEAN-BRIDGE POE / RJ45 / EnoDisc / black / NCC / TAIWAN
12526	AL-512-00-921 EnoDisc KOREA
12541	AL-512-01-868 IP-ENOCEAN-BRIDGE POE / RJ45 / EnoDisc / white / CHINA
12543	AL-512-01-868 IP-ENOCEAN-BRIDGE POE / RJ45 / EnoDisc / white / IDA
12767	AL-512-02-928 IP-ENOCEAN-BRIDGE POE / RJ45 / EnoDisc / white / JAPAN
12605	AL-512-02-928 IP-ENOCEAN-BRIDGE POE / RJ45 / EnoDisc / black / JAPAN
12765	AL-512-00-902 IP-ENOCEAN-BRIDGE POE / RJ45 / EnoDisc / white / COLOMBIA
12766	AL-512-00-902 IP-ENOCEAN-BRIDGE POE / RJ45 / EnoDisc / black / COLOMBIA





### Interfaces

Type 1	EnOcean, bi-directional
Type 2	Ethernet (PoE)

### Power supply

External	Power over Ethernet (PoE)
----------	---------------------------

### Environmental conditions

Operating temperature	0° .. +45° C / 32° .. 113° F (indoor only)
Storage temperature	-20° .. +70° C / -4° .. 158° F
Rel. humidity	0 .. 99 %, r.h., non condens- ing
Protection class	IP20

### User interfaces

Service button	No
Service LED	Yes, inside
Acoustic feedback	No

### Housing

Colors	White, Black
Material	Plastic, PC

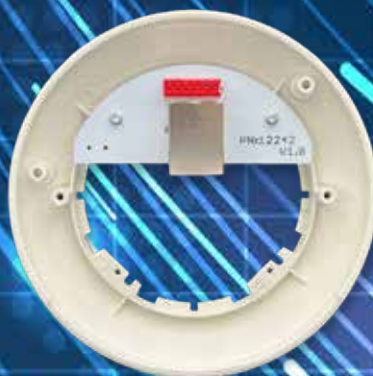
### Dimensions and Weight

Weight	95 g
Dimensions	110 x 38 mm

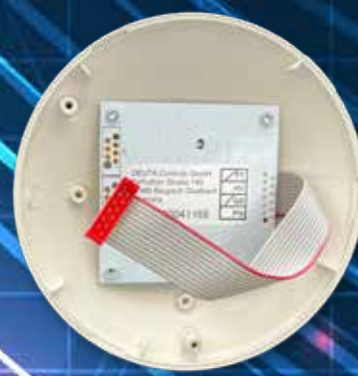
### Connectors

Ethernet	RJ45
----------	------

Connector: RJ45



Transceiver + electronics





# VL-700 BASE - EnOcean MQTT Gateway

The VL-700 BASE is a LINUX based edge controller. With the pre-installed driver software DBA (DEUTA Building Automation) and our ECS application (EnoDisc Controls System) it supports directly up to **32 EnoDisc's** and **up to 500 EnOcean sensors**.

With the 2 Ethernet ports you can connect the VL-700 BASE to the local intranet and the cloud with all state-of-the-art security standards you need in between.

In addition, you can use the combined RS232/RS422/RS485 serial interface port to connect for example a wired sensor via Modbus/RTU.

In the standard configuration, the ECS can be easily set up using an easy to use user interface. After a few steps, you can directly access all sensor data via your cloud solution.

If you need more features in your project, we can adapt the application and add for example interfaces like KNX-TP, BACnet, Modbus/TCP, Modbus/RTU or SIEMENS S7.

- Embedded Yocto Linux System
- Two physically separate Ethernet interfaces
- Integrated firewall
- TLS 1.3
- Access to GUI via HTTPS and VNC
- User Management
- Password protection at system level
- 24/7 industrial controller with international approvals
- Extended temperature range -20 °C to +60 °C
- Supply voltage Industry standard + 24 V DC (10 .. 32 V DC)
- Aluminum die-cast housing for top-hat rail mounting

The VL-700 BASE supports now **4 MQTT Broker connections** at the same time!

NEW



## Ordering information

Part number	Part name
11895	VL-700 BASE
12839	VL-700 BASE ETH / TAIWAN
12757	VL-700 BASE ETH / KOREA





#### System resources

CPU	EnOcean
Operating system	Linux RT
RAM	512 MB
FLASH	4 GB
Real clock	Yes
Backup battery	Yes
Buzzer	Yes

#### Interfaces

Ethernet	2x 10/100 MBit (ETH0 / ETH1)
USB	1x Host 2.0 (max. 500 mA)
Serial	Combined RS-323/RS-422/RS-485
SD card	Yes
Others	Via extension port, i.e. KNX-TP

#### Power supply

Supply voltage	24 V DC (10 - 32 V DC)
Supply current	0.6 A @ 24 V DC

#### Environmental conditions

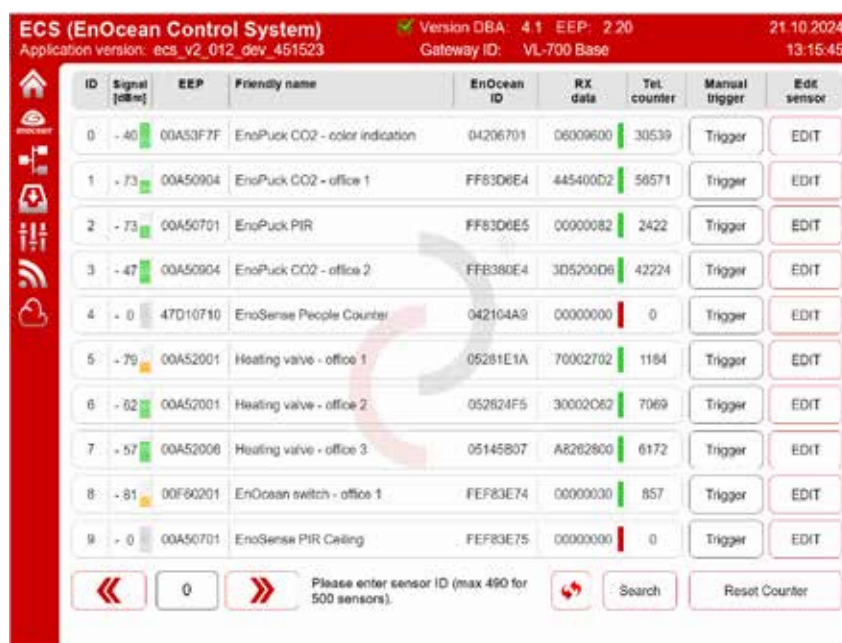
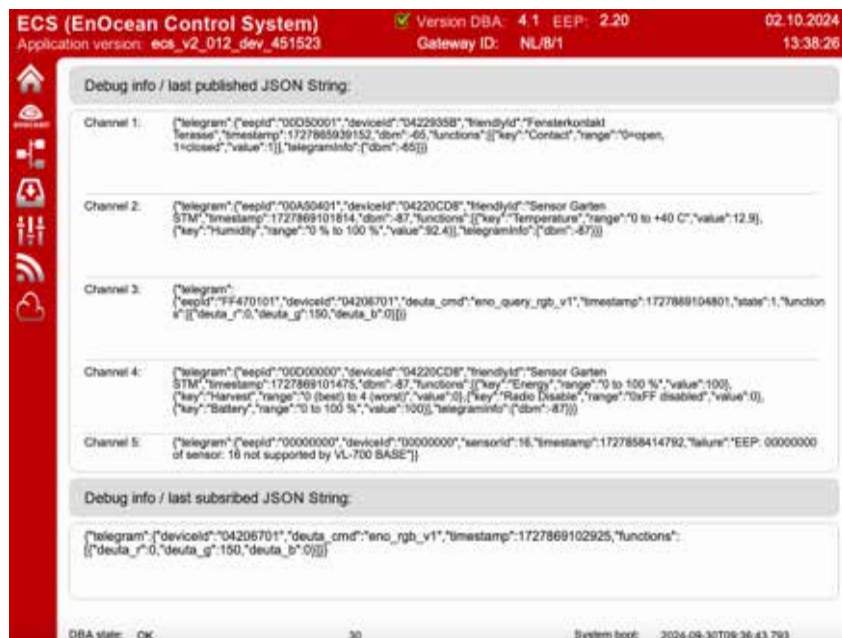
Operating temperature	-20° .. +60° C / -4° .. 140° F
Storage temperature	-20° .. +70° C / -4° .. 158° F
Rel. humidity	5 .. 85 %, non condensing
Protection class	IP20v

#### Dimensions and weight

Weight	1.0 kg
Dimensions	134 x 102 x 45 mm

#### Approvals / standards

CE	Yes
UL	ULus: UL61010-1 / UL61010-2-201 cULus: Class 1 Div 2
ATEX	Zone 2: II 3 G Ex nA IIC T5 Gc
DNV-GL	Yes



# EnOcean Control System

The ECS is a pre-installed application running on the VL-700 BASE (or any other control panel or egde controller from DEUTA Controls).

It is easy to use and it provides a simple but powerful user interface to set up and maintain your project.

To add a sensor to the system, you only have to edit a friendly name, enter the EURID (unique EnOcean ID), and enter the EEP (EnOcean Equipment Profile = which kind of sensor you want to add).

When you already have added at least one EnoDisc in the system by simply entering IP and friendly name, the system is basically ready to transmit EnOcean sensor data towards your cloud.

To edit the clouds interface configuration, there are similar simple dialogs where you can set up the correct values and parameters.





ECS (EnOcean Control System)  
Application version: ecs\_v2\_011\_dev\_451523  
Version DBA: 4.1 EEP: 2.20  
Gateway ID: VL-700 BASE  
18.10.2024 16:13:38

Asset ID	IP address	MAC address	Status	Friendly name	EEP
0	0.0.0.0	000	✗		000
1	0.0.0.0	000	✗		000
2	0.0.0.0	000	✗		000
3	0.0.0.0	000	✗		000
4	0.0.0.0	000	✗		000
5	0.0.0.0	000	✗		000
6	0.0.0.0	000	✗		000
7	0.0.0.0	000	✗		000
8	0.0.0.0	000	✗		000
9	0.0.0.0	000	✗		000

ECS (EnOcean Control System)  
Application version: ecs\_v2\_011\_dev\_451523  
Version DBA: 4.1 EEP: 2.20  
Gateway ID: VL-700 BASE  
18.10.2024 16:13:40

Asset ID	IP address	Status	Friendly name	EEP
0	192.168.1.42	✓	EnOcean E2	000
1	0.0.0.0	✗		000
2	0.0.0.0	✗		000
3	0.0.0.0	✗		000
4	0.0.0.0	✗		000
5	0.0.0.0	✗		000
6	0.0.0.0	✗		000
7	0.0.0.0	✗		000
8	0.0.0.0	✗		000
9	0.0.0.0	✗		000

ECS (EnOcean Control System)  
Application version: ecs\_v2\_011\_dev\_451523  
Version DBA: 4.1 EEP: 2.20  
Gateway ID: VL-700 BASE  
18.10.2024 16:13:14

Parameters

Last state dump recipe local

2024-09-05T08:35:13.789

Backup local Restore local

ECS (EnOcean Control System)  
Application version: ecs\_v2\_011\_dev\_451523  
Version DBA: 4.1 EEP: 2.20  
Gateway ID: VL-700 BASE  
18.10.2024 16:13:41

Setup info / last published JSON string

Channel 1: [{"name": "EnOcean", "type": "EnOcean", "value": "192.168.1.42", "unit": "IP address", "friendly\_name": "EnOcean E2", "EEP": "000", "status": "OK"}]

Channel 2: [{"name": "EnOcean", "type": "EnOcean", "value": "192.168.1.42", "unit": "IP address", "friendly\_name": "EnOcean E2", "EEP": "000", "status": "OK"}]

Channel 3: [{"name": "EnOcean", "type": "EnOcean", "value": "192.168.1.42", "unit": "IP address", "friendly\_name": "EnOcean E2", "EEP": "000", "status": "OK"}]

Channel 4: [{"name": "EnOcean", "type": "EnOcean", "value": "192.168.1.42", "unit": "IP address", "friendly\_name": "EnOcean E2", "EEP": "000", "status": "OK"}]

Channel 5: [{"name": "EnOcean", "type": "EnOcean", "value": "192.168.1.42", "unit": "IP address", "friendly\_name": "EnOcean E2", "EEP": "000", "status": "OK"}]

Channel 6: [{"name": "EnOcean", "type": "EnOcean", "value": "192.168.1.42", "unit": "IP address", "friendly\_name": "EnOcean E2", "EEP": "000", "status": "OK"}]

Channel 7: [{"name": "EnOcean", "type": "EnOcean", "value": "192.168.1.42", "unit": "IP address", "friendly\_name": "EnOcean E2", "EEP": "000", "status": "OK"}]

Channel 8: [{"name": "EnOcean", "type": "EnOcean", "value": "192.168.1.42", "unit": "IP address", "friendly\_name": "EnOcean E2", "EEP": "000", "status": "OK"}]

Channel 9: [{"name": "EnOcean", "type": "EnOcean", "value": "192.168.1.42", "unit": "IP address", "friendly\_name": "EnOcean E2", "EEP": "000", "status": "OK"}]

Channel 10: [{"name": "EnOcean", "type": "EnOcean", "value": "192.168.1.42", "unit": "IP address", "friendly\_name": "EnOcean E2", "EEP": "000", "status": "OK"}]

Setup info / last published JSON string

Channel 1: [{"name": "EnOcean", "type": "EnOcean", "value": "192.168.1.42", "unit": "IP address", "friendly\_name": "EnOcean E2", "EEP": "000", "status": "OK"}]

ECS (EnOcean Control System)  
Application version: ecs\_v2\_011\_dev\_451523  
Version DBA: 4.1 EEP: 2.20  
Gateway ID: VL-700 BASE  
18.10.2024 16:14:51

License information

Debug JSON

Influx DB string

EEP available

IBM

Single room control

Single room properties

Single room Modbus



# Desk-sharing and Smart Office solutions with EnOcean® technology

DEUTA Controls has a turn-key solution with worldwide certifications ready for your desk sharing or Smart Office project:



INFOCOMM  
MEDIA  
DEVELOPMENT  
AUTHORITY

This system is already installed in more than **18 countries** in the world.

The system is based on the following functionality and products:

- Desk occupancy
- Room occupancy
- People counting
- Air quality (CO2 / Temperature / Humidity)
- Local signalling of CO2 level (RGB LED)
- Ethernet-based EnOcean transceiver
- EnOcean Gateway
- MQTT / JSON data interface





# Worldwide delivery and customs experience

We have years of experience exporting our electronic devices, which have proven themselves in international markets. Our dedicated team adapts to the ever-changing requirements and conditions, ensuring that our products meet global standards. With a clear focus on quality and innovation, we not only design products that meet the highest technological standards but also solutions that help our customers achieve their goals.

Every device we export is handled with the utmost care, with all logistical processes running smoothly. This way, we guarantee that our devices are not only functional but also reliable, no matter where they are used.

Our expertise in export is not limited to shipping but also includes comprehensive services from product advice to technical support on site. This enables us to maintain seamless quality control and offer our customers first-class support. Trust in our experience and let us conquer new markets together.



# And finally: Full service on demand. All you need from

We offer you comprehensive support in all areas, tailored to your wishes and requirements, to ensure that your project runs successfully and efficiently.

Our service begins in the planning phase: we provide you with expert support when it comes to radio coverage, careful product selection and precise determination of requirements.

Our expertise guarantees that all technical requirements are precisely recorded and that your vision can be turned into reality. In addition, we take care of the entire device configuration.

From the necessary labeling to the appropriate housing equipment to the careful preparation of the mounting: every detail is handled with the outmost care.

We parameterize the device function so that it is optimally adapted to your individual needs and guarantee a quick and uncomplicated commissioning if we are to carry this out on site.





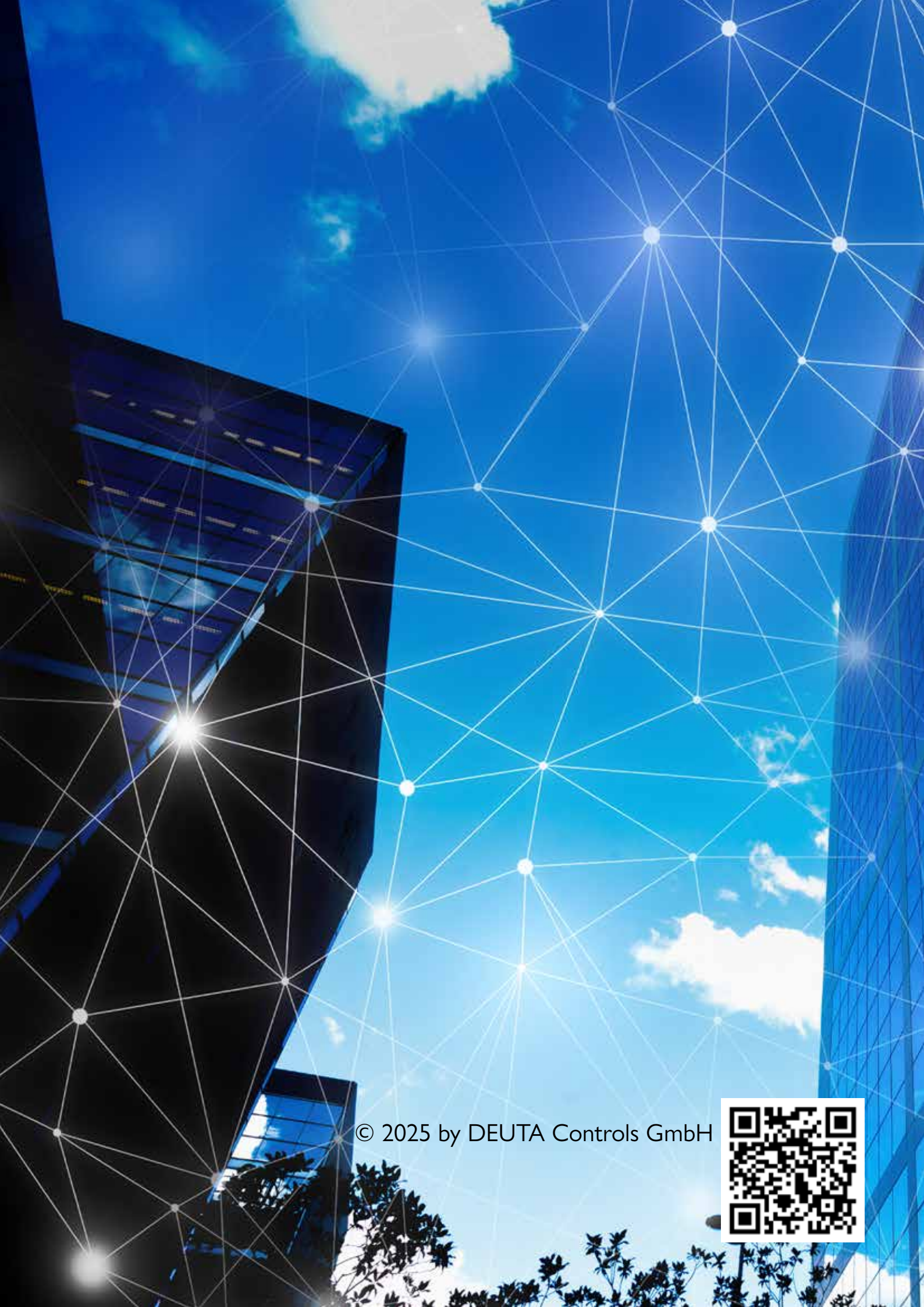
# production to system bring-up services.

Finally, we ensure that all devices are packed in sensible units and shipped to the construction site on time. This way, you can be sure that everything you need will arrive on time and be ready for use.

Put your trust in our comprehensive services to lay the foundation for the success of your project. We will support you every step of the way and ensure that your project is realized exactly according to your ideas.

Every device we export is handled with the utmost care, with all logistical processes running smoothly. This way, we guarantee that our devices are not only functional but also reliable, no matter where they are used.





© 2025 by DEUTA Controls GmbH

